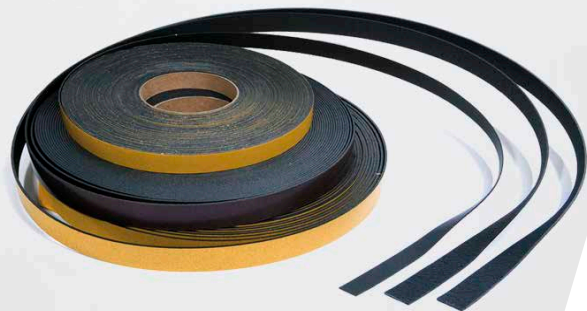


One-sided Adhesive Intumescent Building Materials

One-sided adhesive intumescent building materials allow an installation which is fast, clean and economic. To use them in the best way possible, please read the following recommendations carefully.



ROLFKUHNGBMH

member of svt group

ROLFKUHNGBMH

member of svt group



Rolf Kuhn GmbH

Jaegersgrund 10
57339 Erndtebrueck
Germany
T +49 2753 5945-0
E info@rolfkuhngmbh.com
W kuhn-brandschutz.com

For orders:

F +49 2753 5945-52
E order@svt.de

A company of

svt Products GmbH
Gluesinger Strasse 86
21217 Seevetal
Germany
W svt-global.com

The information in this brochure is based on our knowledge and experience to date. This information does not release the user from carrying out independent tests and trials due to the various influences when processing and applying our product. All information without guarantee. No liability is assumed for printing errors. Subject to change. 12/2021



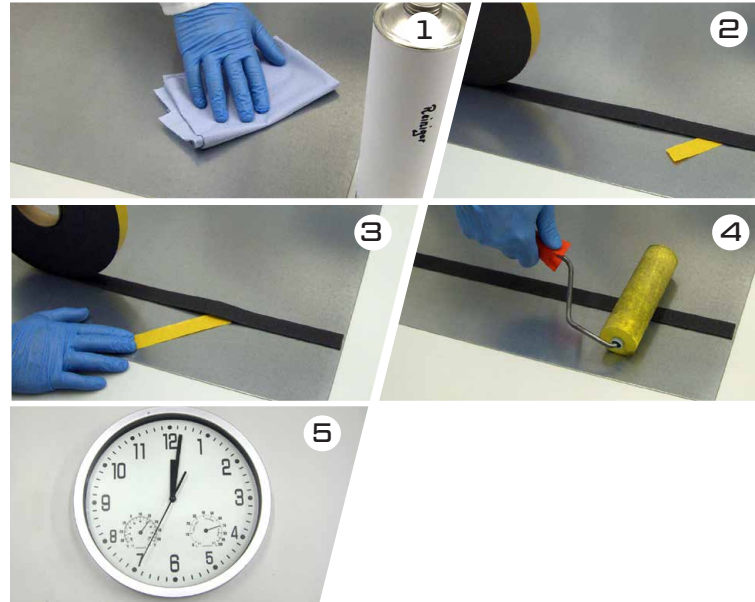
Instructions for Use

One-sided adhesive intumescent
building materials

Requirements

- Ensure that the surface is dry and free from dust, oil, fat, oxides, release agents and other contaminations. Avoid moisture caused by condensations. For harsh surfaces use a balancing adhesive.
- Generally, all metal and high-energetic plastics (for instance ABS, polycarbonate, hard PVC, glass) bond easily. Critical surfaces are polyolefins, rubber, teflon, silicones and powder coated materials. Also materials containing plasticisers are critical as they may change properties of the glue. Thus, detailed tests for critical, uneven or structured surfaces are recommended. Check solvent tolerance of varnish and plastic.
- Best temperature for bonding is between 18 °C and 25 °C in dry rooms. Temperature of the material and the surroundings should be the same to avoid condensation. Avoid temperatures below 10 °C.
- Intumescent strips or pre-cut parts should not be laid around or in corners.
- Drill holes in the intumescent material should have a wider diameter than the drill hole itself.

Instructions



1. Clean and dry the surface with suitable solvents. Allow some time for complete vaporisation of the solvents.
2. Cut the liner, then the glue and finally the building material. Check the accuracy of fit (0.5–1.0 mm slit on both sides) of the cut.
3. Lift off a small part of the liner and adjust the intumescent building material exactly. Then tear off the liner slowly and press simultaneously.
4. For optimum bonding use a pressure roll.
5. Wait for final adhesion (after approx. 24 hours).

Recommendations



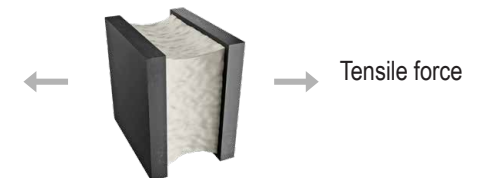
- For the construction, any disruption strain and shear tension should be avoided. Shear and tensile strains must be diverted throughout the whole area. Avoid buckling and tension on the ends of both parts to be bonded.
- To avoid risk of damage, do not stretch the material and apply it without tension.



Shear force



Peel force



Tensile force



Disruption force



Find more information in the download area of our website under the document type „Processing information“.