

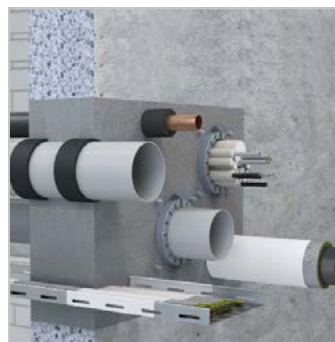
ROKU® System FPCM

Fire resistance rating:

EI 60 / 90 / 120 according to EN 13501

Approvals:

 Europe: ETA subwithted



Description

The ROKU® System FPCM consists of the fire protection mortar ROKU® FPCM and the ROKU® AWM II fire protection sleeve, the ROKU® Strip fire protection strip (width 50 mm), the ROKU® IM cable bandage or a fire protection coating. Electrical cables (single, in harnesses or on a cable tray) with individual diameters of up to 80 mm can be fed through the aperture in the partition. Similarly, cable conduit made of polyolefin with individual diameters of up to 40 mm or bundle diameters of up to 110 mm may be passed through the partition. In addition, non-combustible pipes insulated with mineral wool or synthetic rubber and having diameters of up to 168,3 mm can be sealed off. The cables on either side of the partition are wrapped with the cable bandage ROKU® IW or coated with a fire protection coating.

Applications

- Solid walls ≥ 100 mm and solid floors ≥ 150 mm
- Insulation thickness in walls and floors ≥ 170 mm
- Max. seal size 1200 x 2000 mm with and without cable tray designed to support cables with max. $\varnothing 80$ mm
- Cable bundles up to $\varnothing 100$ mm for individual cable diameters of up to 21 mm
- Coaxial or waveguide cables
- Conduit made of polyolefin or steel for individual cable diameters of up to 40 mm or with max. $\varnothing 110$ mm in bundles
- Non-combustible pipes with mineral wool insulation with max. $\varnothing 168,3$ mm
- Copper pipes with Armaflex Protect insulation with max. $\varnothing 88,9$ mm

Advantages

- Easy installation and subsequent installation
- High flexibility

Supplied form

ROKU® System FPCM Penetration Seal		Accessories	
Article description	Art.-No.	Article description	Art.-No.
FPCM fire protection mortar, 10 kg	0733000000	Label	0750050060
FPCM fire protection mortar, 20 kg	0733000001		
AWM II fire protection collar, up to $\varnothing 110$ mm	see page 8		
ROKU® Strip fire protection wrap, 12500 x 50 x 2 mm, self-adhesive	0303209060		
ROKU® Strip fire protection wrap, 12500 x 50 x 2 mm, not self-adhesive	0303209000		
IM cable bandage, 5200 x 250 mm	0734000100		

Online



All approvals can be downloaded at
www.kuhn-brandschutz.com/systeme/roku-system-fpcm
 or via the QR-Code.

Technical data

Max. Seal size	<ul style="list-style-type: none"> ■ Wall: 2000 x 1200 mm ■ Floor: 2000 x 1200 mm
Suitable subsoils	<ul style="list-style-type: none"> ■ Solid walls ≥ 100 mm ■ Solid floors ≥ 150 mm
Seal thickness of mortar	<ul style="list-style-type: none"> ■ ≥ 170 mm
Suitable insulations	<ul style="list-style-type: none"> ■ Mineral fibre or stone wool ≥ 40 kg/m³ gross density ■ Armaflex Protect
Suitable installations	<ul style="list-style-type: none"> <ul style="list-style-type: none"> ■ PVC, PE, PP pipes ≤ Ø 110 mm ■ EI 120 U/U with AWM II collar ■ PVC, PE, PP pipes ≤ Ø 110 mm ■ EI 120 U/C with IWM III plus bandage ■ Metal pipes ≤ Ø 168,3 mm with mineral fibre insulation <ul style="list-style-type: none"> ■ Copper pipes ≤ Ø 88,9 mm with Armaflex Protect ■ Cable or electrical lines ≤ Ø 80 mm ■ Electrical installation pipes ≤ Ø 40 mm (single) or ≤ Ø 110 mm (bundles) of polyolefin ■ Coaxial or waveguide cables

Dimensions of AWM II collar

Collar dimensions (mm)	32	40	50	63	75	90	110				
Inner diameter (mm)	36	44	54	67	79	94	114				
Outside diameter (mm)	50	58	68	94	106	132	155				
Component height (mm)	26	26	26	26	26	26,6	26,6				
No. of fixing tabs (pcs)	2	2	2	4	4	4	4				

Number of layers ROKU® Strip fire protection wrap (12500 x 50 x 2 mm)

Type of pipes	Pipe diameter (mm)	Pipe wall thickness (mm)	Insulation	Number of layers (wall)	Number of layers (floor)
PE, PP, PVC	≤ 75 mm	1,8 - 5,6	without	2	2
PE, PP, PVC	> 76 ≤ 110 mm	1,8 - 12,3	without	3	3